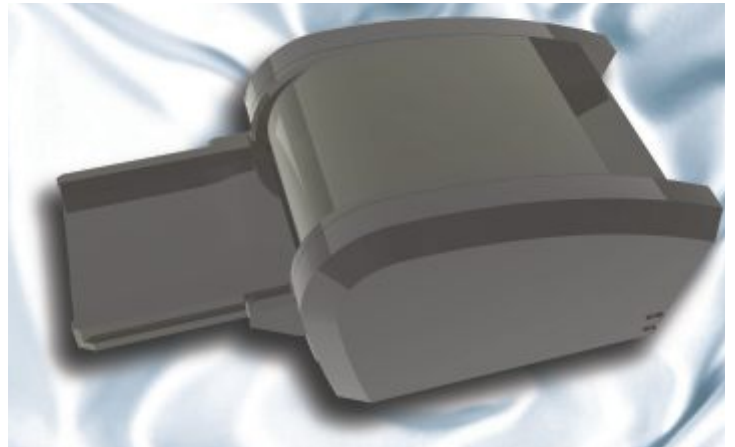


VCS 250 SCANNER

Desktop Check Scanner for Corporate Check Truncation

In the new Check 21 and ARC environments, corporations and others need to truncate their A/R payment checks into high quality bitonal or grayscale images immediately on receipt. As banks are able to accept check images as the deposit, companies who can present valid, legible images will be able to obtain their cash more promptly, as well as having an accurate, easily and quickly retrievable electronic image of the transaction to resolve any queries.



VisionShape's new VCS 250 check scanner designed by Peripheral Dynamics Inc. (PDI) is a unique, compact, high speed individual check scanner with integrated MICR line reading to capture checks where they are first received. PDI builds rugged, reliable products for the gaming and election industries. Many hundreds of thousands of high speed PDI scanners are used everyday to capture lottery tickets worldwide without complaint or problem even in the most demanding locations. The VCS 250 can scan both sides of a check while reading the MICR line in less than half a second, making it the fastest check scanner in its class.

The VCS 250 with its manual feed, automatic deskew, magnetic MICR reading and high speed image creation is ideal for offices and other environments that need to convert small numbers of checks into high quality images on demand. Its bi-directional transport allows the image to be analyzed and, if necessary, immediately returned to the operator for rescanning or other operations. This feature can be used to ensure quality images and reduce fraud.

FEATURES/BENEFITS:

- ◆ Simple straight through directional feed mechanism
- ◆ Compact size to fit into small office environments
- ◆ Two-sided high speed duplex check scanning at 22 inches/second
- ◆ Up to 200 dpi bitonal or 8 bit grayscale output
- ◆ High quality images

1830 E. Miraloma Avenue • Suite A • Placentia • CA • 92870
Tel: 714-792-3612 • 1-800-962-3585 • Fax: 714-792-3621
e-mail: sales@visionshape.com • Internet: www.visionshape.com

Place de L'université • 16/3 • 1348 Louvain-la-Neuve • Belgique
Tel: +32(10)48-3531 • Fax: +32(10)48-3536
e-mail: europa@visionshape.com

VisionShape Inc.
BRINGING IMAGING INTO FOCUS

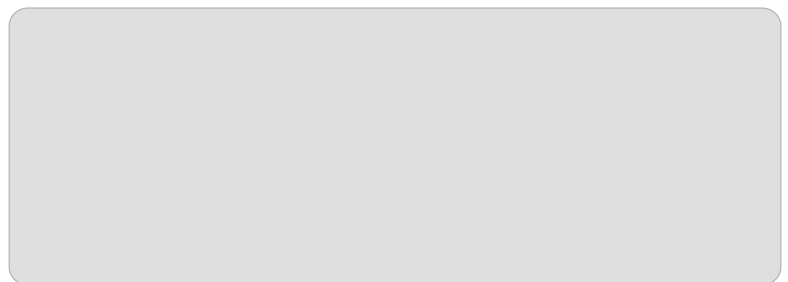
Subsidiary of Peripheral Dynamics Inc.

VCS 250 Check Scanner

Desktop Check Scanner for Corporate Check Truncation

SPECIFICATIONS

SCANNING SPEED <ul style="list-style-type: none">◆ Document Transport Speed: 22 ips (558mm/sec)◆ Scan Head: 0.25msec/scan line	IMAGE OUTPUT FORMATS <ul style="list-style-type: none">◆ Bitonal 1 bit/pixel or grayscale 8 bit/pixel
IMAGE RESOLUTION <ul style="list-style-type: none">◆ 8 dpm (200 dpi)	INTERFACE <ul style="list-style-type: none">◆ USB 2.0 (Hi-speed); Also USB 1.1 (Full-speed) compatible for bitonal data
DOCUMENT SIZES AND WEIGHTS <ul style="list-style-type: none">◆ Width: 2.75" to 4.25" wide (70mm x 108mm)◆ Length: 3.15" min to 11.0" max◆ Paper Weight: 20-32 lb. Bond	MICR READ <ul style="list-style-type: none">◆ E13B or CMC-7
FEATURES <ul style="list-style-type: none">◆ Bi-directional from transport◆ Dual-sided imaging◆ Rapid form transport/image processing◆ MICR reading/decoding◆ Easy opening paper path access◆ Adjustable scan head threshold/tracking◆ Increased depth-of-field	PHYSICAL AND ELECTRICAL <ul style="list-style-type: none">◆ Dimensions L. 9.75" (24.77cm) x W. 7.5" (19.05cm) x H. 5.4" (13.72cm)◆ Weight: Approximately 3 lbs (1.4 Kg)◆ Humidity: Operating: 10% - 85% RH non-condensing Storage: 5% - 95% RH non-condensing◆ Electrical Specifications: External power: 120/240VAC Internal power: 24 ± 5% VDC @ 32 W◆ Temperature: Operating: 0°C to +50°C Storage: -25°C to +75°C
IMAGE PROCESSING <ul style="list-style-type: none">◆ Skew correction◆ Form re-orientation◆ Image area - data extraction	DRIVER <ul style="list-style-type: none">◆ TWAIN, optional ISIS
SCAN HEAD <ul style="list-style-type: none">◆ Linear array - 896 pixels◆ Light: Reflective 570 nm	OPERATING SYSTEMS <ul style="list-style-type: none">◆ Windows 98, ME, 2000, XP



1830 E. Miraloma Avenue • Suite A • Placentia • CA • 92870
Tel: 714-792-3612 • 1-800-962-3585 • Fax: 714-792-3621
e-mail: sales@visionshape.com • Internet: www.visionshape.com

Place de L'université • 16/3 • 1348 Louvain-la-Neuve • Belgique
Tel: +32(10)48-3531 • Fax: +32(10)48-3536
e-mail: europe@visionshape.com